



PRECISION

MANUFACTURING



**SOLVING
TREE &
BRUSH
PROBLEMS
SINCE 1992**



**Our Revolutionary Products Let
You Reclaim Your Pastures, Fields
& Fence Rows From Unwanted
Trees and Brush.**

2021 BROCHURE



THE ORIGINAL SINCE 1992!

Heavy Duty HyREACH CLIPPER[®] TELECLIPPER

Extreme Duty With Industry Leading Reach!

TC6451



Maximum Cut Between 9" & 12"



Cut Hard to Reach Areas



10' Reach



Long Reach for Ditches & Creek Beds

FEATURES:

- Boom Extends Cutting Surface to 10' 3" and Retracts to 7' 3"
- Control the Cutting, Rotating & Telescoping from Inside the Cab with a Wireless Remote
- 180° Rotation of Clipper Head to Cut Limbs on Both Sides of the Tree
- 664000 Extreme Duty Clipper Head—Our STRONGEST!
- Rectangular Telescoping Boom for Maximum Strength
- Optional PIN Connectors Available

TELECLIPPER



VIDEO

THE ORIGINAL SINCE 1992!

Heavy Duty HyREACH CLIPPER[®] EXTREME DUTY



MODEL ED6451

MAXIMUM CUT BETWEEN 9" & 12"



664000 Clipper Head

ED7451



Offset Tractor Mount

TC6451



Clean Fence Rows



Power Rotate to Trim Limbs

FEATURES:

- Extra Long Upper and Lower Plate Weldments and Supports for Added Strength
- Self-Cleaning Side Spacers to Prevent Buildup of Dirt & Debris That Could Cause Damage
- "Easy-Release" to Prevent Trees & Limbs from Getting Wedged Between Blades
- Fully Plumbed with Hoses, Couplers, Hose Wrap, Solenoid Valve, & Valve Guard
- Cut at Ground Level or Power Rotate Head to Trim Limbs
- Six-Foot Reach Allows High Reach Cutting
- Wireless Remote to Control Rotation

EXTREME DUTY



VIDEO

THE ORIGINAL SINCE 1992!

Heavy Duty HyREACH CLIPPER CLAMPit®

Control The Fall Of Trees & Protect Your Equipment!



Hold & Cut Limbs



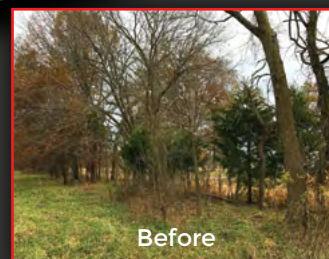
Hold & Cut Trees
at Ground Level



Neatly Stack Trees & Limbs

**CLAMPit can also be ADDED
to an existing XD or
ED series HyReach Clipper**

Load limit for CLAMPit is 200 lbs
Visit www.PRECISIONMFG.com/CLAMPit
for our log size and weight chart.



Before



After

HyREACH MINI CLIP

Finally, A Tree Shear For Smaller Equipment!

MC7551 - Adds Auxiliary Hydraulics to Tractor



Three Brace
Supports

Telescopes
6', 7', 8'

7" Cut
Capacity

- Fully Plumbed with Couplers
- Universal Quick Attach Brackets
- 2500 PSI Hydraulic Pressure Required
- Minimum 1200 lb Lift Required
- Weight 632 lbs

180° Rotation

Optional Sprayer is Available

See our accessories for details at www.PRECISIONMFG.com

MINI CLIP



VIDEO

MC7551 - Extended 8 ft



Counter Weight Recomendad

MC6551

Wireless Remote Included



Skid Steers & Tractors with Auxiliary Hydraulics

Sometimes You Just Don't Want To Leave A Stump!

535 **TREE PULLER** **"ELIMINATOR"**

535000



- Double Row of Teeth for Better Grip of Tree
- Large Brush Guard & TAMEit for hoses
- Saw Blade for Trees Too Big to Cut
- Spade Points to Dig Roots & Loosen Soil

525 **TREE PULLER** **"EXTREME DUTY"**

525000



- 3/4" Blades, T1 Steel
- Telescoping Cylinder Guard
- Fully Plumbed
- Root Ripper to Loosen Trees

REMOVES TREES – ROOTS AND ALL!



No More Stumps



Telescoping Guard



Pulling Multi Floral Roses



Post Puller

Rugged Construction for Clearing : Pastures, CRP Land, Roadsides & Ditches

ADD A GRAPPLE



VIDEO

ADD A GRAPPLE MINI/SINGLE/DOUBLE

Convert Existing Bucket Into Grapple Bucket!

111155



MINI

- 28" Opening
- Fits Buckets 36" to 55" in Width
- Lightweight for Smaller Equipment
- Weighs 125 lbs

114400



SMALL

- 35" Opening
- Fits Buckets 45" to 63" in Width
- Lightweight for Smaller Equipment
- Weighs 132 lbs

111100



SINGLE

- 35" Opening
- Fits Buckets 60" to 79" in Width
- Secures Load in Bucket
- Weighs 155 lbs

112200



DOUBLE

- 35" Opening
- Fits Buckets 60" to 79" in Width
- Clamps Down on Uneven Loads
- Includes Guards, Hoses & Pioneer Couplers
- Weighs 264 lbs



Easy Four Hole Install



Removeable Grapple



Clamps Uneven Loads

ADD A GRAPPLE



SELECTOR GUIDE

CONTRACTOR



VIDEO

ADD A GRAPPLE

CONTRACTOR/COMMERCIAL

Convert Existing Bucket Into Grapple Bucket!

222550



CONTRACTOR – SKID STEER

- 39" Opening
- Fits Buckets 68" to 90" in Width
- Double Grapples Clamp Down on Uneven Loads
- Fully Plumbed with Flat Face Couplers
- Weighs 387 lbs

222440



CONTRACTOR – FRONT LOADER

- 39" Opening
- Fits Buckets 68" to 90" in Width
- Stabilizes Load with Double Grapples
- Fully Plumbed with Pioneer Couplers
- Weighs 387 lbs

225000



COMMERICAL

- Extra Wide 49" Opening
- Fits Buckets 80" to 100" in Width
- Curved Tines for Wider Grip & Easy Release
- Includes Double Welded Cylinders with Guards & Hoses (Couplers Sold Separately)
- Weighs 413 lbs

ADD A GRAPPLE



SELECTOR GUIDE



225000 on a Back Hoe



Large Loads



Clamps Tight

PALLET FORK



VIDEO

ADD A GRAPPLE

PALLET FORK
Standard / Adjustable / Mini

Convert Existing Pallet Forks Into Grapple Forks!

336S27



PALLET FORK – STANDARD

- Easy On / Easy Off
- Holds Brush, Limbs and Logs
- Stabilizes Pallet Loads
- Optional Log Clamp
- Weighs 213 lbs

339S27



PALLET FORK – ADJUSTABLE

- Easy On / Easy Off
- Holds Single Loads & Adjustable Up to a 74" Bale of Hay
- Stabilizes Pallet Loads
- Optional Log Clamp
- Weighs 346 lbs

73300



PALLET FORK – MINI

- Easy On/ Easy Off
- Fits All Class 2A Pallet Forks
- 47" Opening, 27" Wide Grapples
- Recommended For Up to 40 hp Tractors
- Weighs 112 lbs

Hoses & Couplers Not Included



Holds Firewood



Optional Log Clamp



Adjustable Height (339S27)



Hold Loose Loads

Heavy Duty 444 GRAPPLE RAKE

Contractor 433 GRAPPLE RAKE

444 Series

73" Opening



433 Series

73" Opening



- Models Available in 72" & 85" Widths • Greased Pivot Points • 6" Spacing of Tines to Sift the Dirt
- Concealed Cylinders • Fully Plumbed • Hose Management • Single or Double Grapples Available

HEAVY DUTY 444



VIDEO

"OUR STRONGEST"

GRAPPLE



SPECIFICATIONS



Large Loads



Stacking Bales



Clamps Down Tight



Reinforced Subsoil Points



Reinforced Grapple Teeth



Extra Wide Opening 73"



Loading Bales

See our Grapple Specifications at www.PRECISIONMFG.com/grapple-specifications for more details.

The Closer 344 GRAPPLE RAKE

344 Series

65" Opening



- 72" Width with Single or Double Grapples
- Fully Plumbed with Concealed Cylinders
- Greased Pivot Points
- Weighs 915 lbs

Standard Duty GRAPPLE RAKE

333 Series

50" Opening



- 60" or 72" Width (Tine Spacing is 6")
- Only Double is Plumbed with Cylinder Guards
- Lighter Weight for Utility & Compact Tractors
- Weight starts at 398 lbs

See our Grapple Specifications at www.PRECISIONMFG.com/grapple-specifications for more details.



65" Opening for Large Loads



GRAPPLE
SPECIFICATIONS
STANDARD DUTY
VIDEO



72" Standard Duty Double Grapple Rake



Reinforced Tines



Rake Stands



Hose Guides



333 Double Grapple

BIG MOUTH MINI 322 GRAPPLE RAKE

BIG MOUTH MINI 320 GRAPPLE RAKE

322

48" Opening



- Double Grapples, 48" Opening and 59" Wide
- Fully Plumbed with Concealed Cylinders
- Reinforced Rake Tines
- Recommended Up to 40 HP
- Weight: JD 276 lbs, SS 264 lbs

320

John Deere Only - 48" Opening



- Double Grapples, 48" Opening, and 50" Wide
- Fully Plumbed with John Deere Quick Attach
- Lighter Weight for John Deere Tractors Only
- Includes Pioneer Couplers
- Weight: 241 lbs

THE "BIG MOUTH" MINI GRAPPLE RAKE



Clamps Tight



Reinforced Tines



Clamps Down Uneven Loads



Stands Upright for Storage



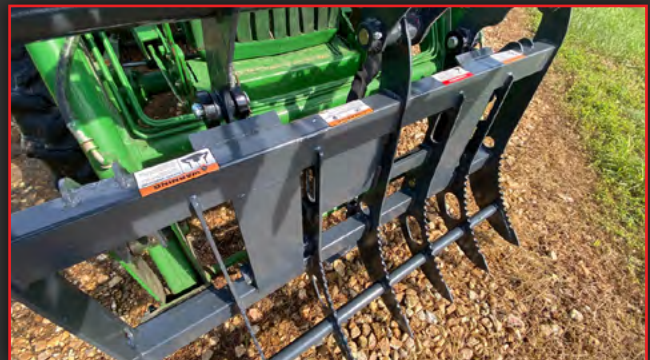
MINI 322

VIDEO



MINI 320

VIDEO



Fully Plumbed with Concealed Cylinders

XTRA VALVE KIT

ADD AN **XTRA** SET OF HYDRAULIC OUTLETS!



MP010

Hoses & Couplers Not Included

Adds an **XTRA** set of hydraulic outlets. Fits most larger equipment with hydraulic flow of up to 24 GPM. Switch diverts the flow of hydraulic fluid.



MP020

Adds an **XTRA** set of hydraulic outlets. Fits most Utility & Compact Tractors. Handles hydraulic flow of up to 13 GPM. Switch diverts the flow of hydraulic fluid.



Valve Kit Mounted

Kits Include

- Solenoid Valve
- 12 Hydraulic Fittings
- Wiring Harness and Switch
- Mounting Brackets & Hardware Kit

Hoses & Couplers Not Included

XTRA VALVE KIT



VIDEO

TAMEit™

MP310 & MP320

“Protect Your Hoses From The Pinch!”



Protect your hydraulic hoses with the TAMEit! The TAMEit will lift up the hoses to clear any pinch points and will flex to allow full movement of the hoses without overstretching them.

Models:

MP310 for 3/8" Hose Clamps

MP320 for 1/2" Hose Clamps



Bolt On Option Available

- Keep Hoses Away From Tracks & Tires
- Avoid Tangled Hoses
- Prevents Pinching of Hydraulic Hoses

SPRAYER

SP101

Spray Directly On Fresh Cuts!



Prevent growth on cut trees. Easy to install. Fits all XD & ED series HyReach Clippers. Spray is controlled by momentary switch. Sprays approximately 12" wide when 1 ft off the ground.

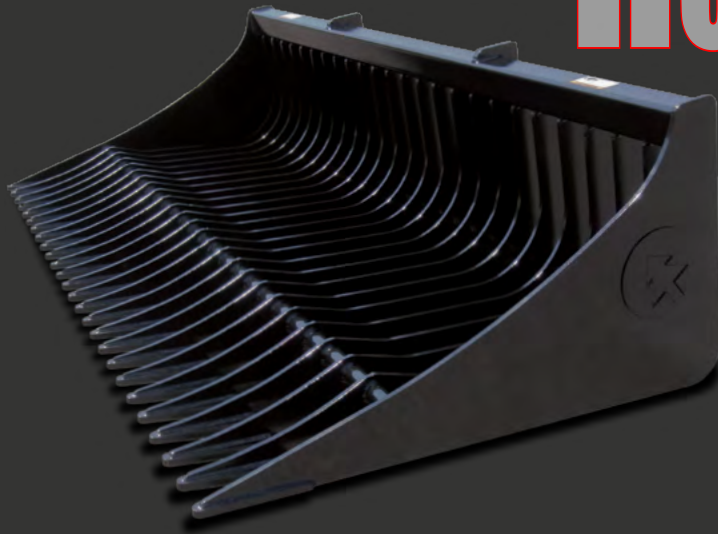
Kit Includes

Tank, Pump, Wiring Harness, 43" Hose with Nozzle, Pump Mounting Bracket, Momentary Switch and Nozzle Mounting Bracket.



THE **ROLLING STONE**

ROCK BUCKET



- 3" Tine Spacing Sifts Rocks and other Debris.
- Available in 58," 72," 85" and 99" Widths
- Universal Quick Attach Bracket Included
- Optional Grapple For All Models

ROCK BUCKET



VIDEO



Protected Cylinders



Rock Clean-Up



Remove Debris



60" Opening

788

Pallet Forks



- Easy-Enter with Tread Guard Plate
- 10 Fork Locking Positions Up to 43" Wide
- 48" Forks that are 4" Wide
- Universal Quick Attach
- 4400 lb Capacity/Pair Class 2A
- Weight 392 lbs

FORKS & SPEARS

888

Bale Spears



- Easy-Enter with Tread Guard Plate
- 47" Ribbed Spear for Extra Strength
- Slide-In Type Spear with Retaining Bolt
- 2 Spears on 24" Centers Rated for 3,234 lb Load
- Universal Quick Attach
- Weight 188 lbs



PRECISION
MANUFACTURING

WEBSITE



800 Market Street - Sedalia, Missouri 65301
Toll Free : (888) 497-3224 www.PRECISIONMFG.com



WHY CHOOSE PRECISION MANUFACTURING PRODUCTS?

Simple

We have been solving tree & brush problems for three decades. We offer unique & high quality products to many industries. We are well known for reclaiming pastures, increasing field & crop production, clearing fence rows, and improving roadways to name a few. We have participated in hurricane, tornado, and other national disaster cleanups.

VISIT US AT PRECISIONMFG.COM OR FOLLOW US ON

